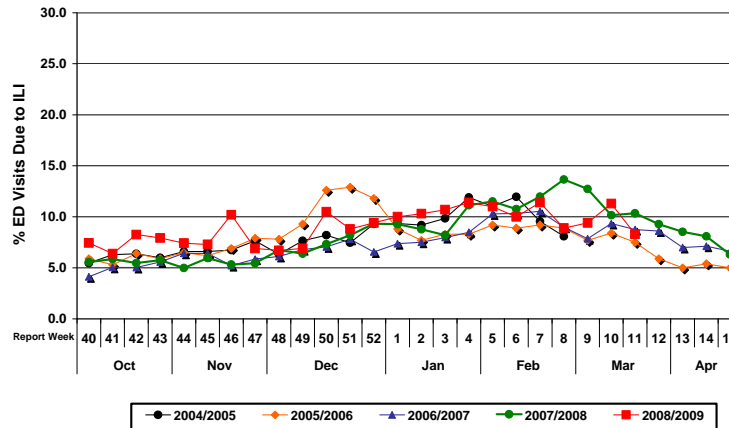


# Influenza Season 2008/09 – Riverside County, California

## Influenza Surveillance Weekly Update

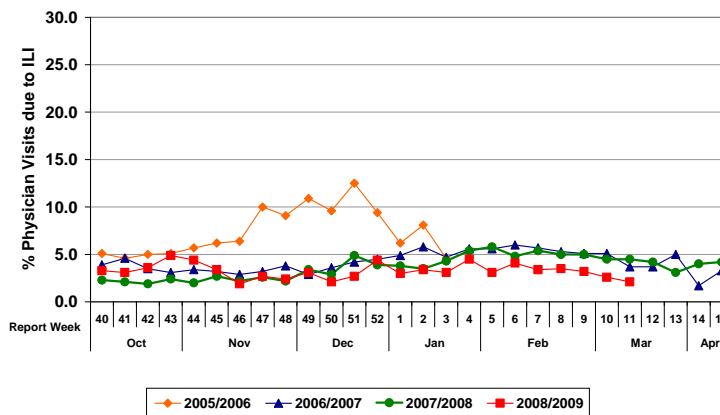
### Week ending March 21, 2009

Percent of Emergency Department (ED) Visits Due to Influenza-Like Illness (ILI), Riverside County: 2008/09 Influenza Season



During week 11, 8.3 percent of visits to Riverside County emergency departments were related to influenza-like illnesses. Compared to historical data, this is within normal limits.

Percent of Total Visits at Physician Sentinel Sites due to Influenza-like Illness (ILI), Riverside County: 2008/09 Influenza Season



During week 11, 2.1 percent of visits to physician sentinel sites were related to influenza-like illnesses. Compared to historical data, this is within normal limits.

**School Absenteeism:** As of week 10\*, 10.4%\*\* of students at sentinel school sites were absent due to illness. This is similar to the same time last year when 11.3% of students at sentinel school sites were absent due to illness. \*Data reporting delayed one week. \*\*Data from schools who specifically report absence due to illness.

**State Influenza Activity:** As of week 10\*, influenza activity in California has remained regional based upon confirmed influenza in at least two but less than half of the regions of the state.

**National Influenza Activity:** As of week 10\*, influenza activity in the United States decreased slightly. The proportion of deaths nationwide attributed to pneumonia and influenza (P&I) was below the epidemic threshold.

\*Data reporting delayed one week.

#### Additional Resources

Riverside County Influenza Vaccine Locations:

Call 1-888-246-1215 or visit <http://www.rivco-diseasecontrol.org/pdf/flu.pdf>

State of California Influenza Information:

<http://www.dhs.ca.gov/ps/dcdc/vrdl/html/flu/fluintro.htm>

United States Influenza Information:

<http://www.cdc.gov/ncidod/diseases/flu/weekly.htm>