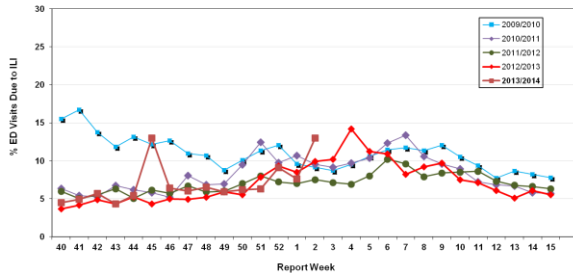


Influenza Season 2013/2014 – Riverside County, California

Influenza Surveillance Weekly Update

Week ending January 11, 2014

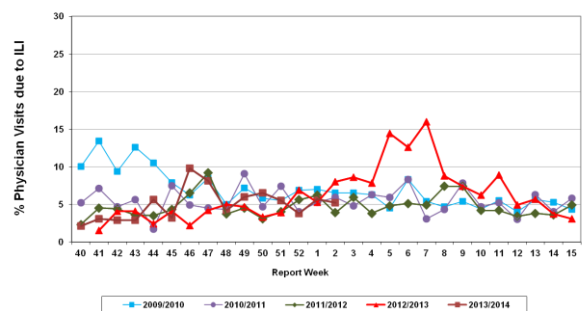
Percent of Emergency Department (ED) Visits due to Influenza-Like Illness (ILI), Riverside County: 2013/2014 Influenza Season



During week 2, 13.0% of visits to Riverside County emergency departments were related to influenza-like illnesses. Compared to historical data, this is above normal limits.

During week 2, 5.2% of visits to physician sentinel sites were related to influenza-like illnesses. Compared to historical data, this is within normal limits.

Percent of Total Visits at Physician Sentinel Sites due to Influenza-like Illness (ILI), Riverside County: 2013/2014 Influenza Season



Deaths due to Pneumonia and Influenza: During week 2, 8.7% of deaths were due, in part, to pneumonia or influenza. Compared to historical data, this is above normal limits.

School Absenteeism: During week 2, 14.1% of students at sentinel school sites were absent due to illness. Compared to historical data, this is above normal limits.

State Influenza Activity: During week 1*, overall influenza activity was “widespread” in California. Based on available data from 76 out of an average of 128 enrolled sentinel providers, the percentage of visits for ILI in week 1 (5.2%) was above the epidemic threshold (4.1%). Three influenza-associated deaths in adults less than 65 years of age were reported during Week1. Two influenza outbreaks were reported, no novel influenza cases have been detected in California to date.

* Data reporting delayed one week.

National Influenza Activity: During week 1*, influenza continued to increase in the United States. The proportion of outpatient visits for influenza-like illness (ILI) was 4.4%, above the national baseline of 2.0%. All 10 regions reported ILI above region-specific baseline levels. Twenty states experienced high ILI activity, seven states and New York City experienced moderate ILI activity, 11 states experienced low ILI activity; 12 states experienced minimal ILI activity and the District of Columbia had insufficient data. The geographic spread of influenza in 35 states was reported as widespread; 12 states and Guam reported regional influenza activity; the District of Columbia, Puerto Rico and two states reported local influenza activity; the District of Columbia, Puerto Rico, and two states reported local influenza activity, one state reported sporadic influenza activity and the U.S. Virgin Islands did not report. During week 1, 6.9 % of all deaths reported through the 122-Cities Mortality Reporting System were due to P&I. This percentage was below the epidemic threshold of 7.1% for week 1. Four influenza-associated pediatric deaths were reported.

* Data reporting delayed one week.

Additional Resources

Riverside County Influenza Information:

<http://www.rivco-diseasecontrol.org/Services/InfluenzaInformation.aspx>

State of California Influenza Information:

[http://www.cdph.ca.gov/healthinfo/discond/Pages/Influenza\(Flu\).aspx](http://www.cdph.ca.gov/healthinfo/discond/Pages/Influenza(Flu).aspx)

United States Influenza Information:

<http://www.cdc.gov/ncidod/diseases/flu/weekly.htm>

Epidemiology and Program Evaluation
 County of Riverside Department of Public Health
<http://www.rivcohealthdata.org>
 (951) 358-5557

