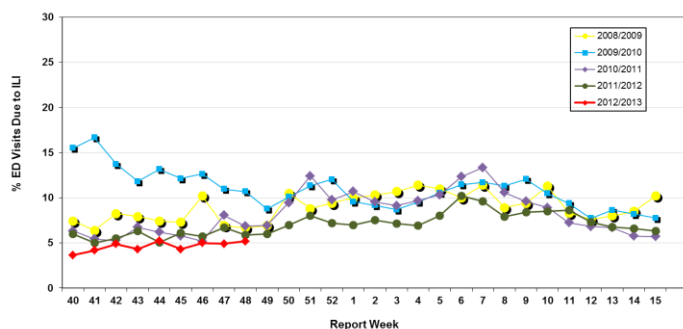


Influenza Season 2012/2013 – Riverside County, California

Influenza Surveillance Weekly Update

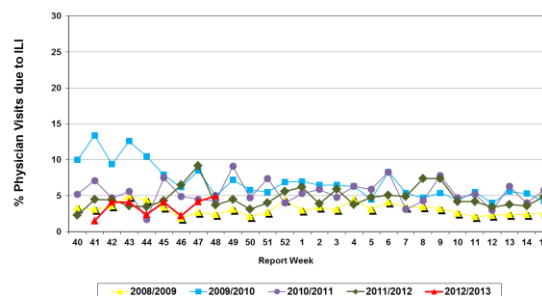
Week ending December 1, 2012

Percent of Emergency Department (ED) Visits
due to Influenza-Like Illness (ILI),
Riverside County: 2012/2013 Influenza Season



During week 48, 5.2% of visits to Riverside County emergency departments were related to influenza-like illnesses. Compared to historical data, this is low but within normal limits.

Percent of Total Visits at Physician Sentinel Sites
due to Influenza-like Illness (ILI),
Riverside County: 2012/2013 Influenza Season



During week 48, 5.0% of visits to physician sentinel sites were related to influenza-like illnesses. Compared to historical data, this is within normal limits.

Deaths due to Pneumonia and Influenza: During week 48, 8.3% of deaths were due, in part, to pneumonia or influenza. Compared to historical data, this is within normal limits.

School Absenteeism: During week 48, 9.3% of students at sentinel school sites were absent due to illness. Compared to historical data, this is within normal limits.

State Influenza Activity: During weeks 46 and 47*, overall influenza activity in California remained “sporadic”. Outpatient influenza-like illness (ILI) was low in Weeks 46 (1.3%) and 47 (1.1%). The California Department of Public Health received no reports of laboratory-confirmed influenza deaths in patients under age 65 and no novel influenza cases have been detected in California to date. * Data reporting delayed one week.

National Influenza Activity: During week 47*, influenza activity increased in the United States. The proportion of outpatient visits for influenza-like illness (ILI) was 2.2%, which is at the national baseline of 2.2%. Five regions reported ILI above region-specific baseline levels. During week 47, 6.3% of all deaths reported through the 122 Cities Mortality Reporting System were due to P&I. This percentage was below the epidemic threshold of 6.7% for week 47. No influenza-associated pediatric deaths were reported during week 47. The geographic spread of influenza in 4 states was reported as widespread; 7 states reported regional activity; 19 states reported local activity; the District of Columbia and 18 states reported sporadic activity; Guam and 1 state reported no influenza activity, and Puerto Rico, the U.S. Virgin Islands and 1 state did not report.

* Data reporting delayed one week.

Additional Resources

Riverside County Influenza Information:
State of California Influenza Information:
United States Influenza Information:

<http://www.rivco-diseasecontrol.org/SeasonalInfluenza/>
[http://www.cdph.ca.gov/healthinfo/discond/Pages/Influenza\(Flu\).aspx](http://www.cdph.ca.gov/healthinfo/discond/Pages/Influenza(Flu).aspx)
<http://www.cdc.gov/ncidod/diseases/flu/weekly.htm>

Epidemiology and Program Evaluation
County of Riverside Department of Public Health
<http://www.rivcohealthdata.org>
(951) 358-5557

