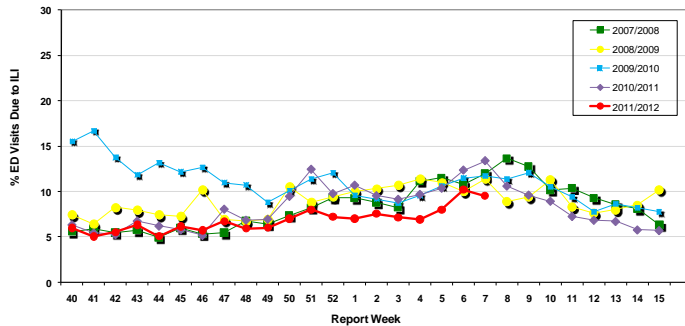


# Influenza Season 2010/2011 – Riverside County, California

## Influenza Surveillance Weekly Update

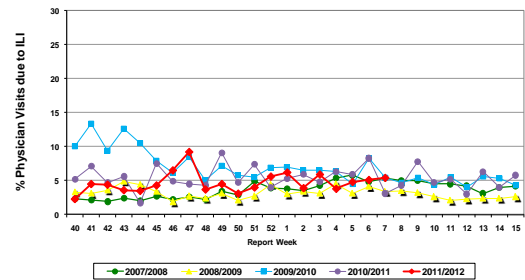
### Week ending February 18, 2011

Percent of Emergency Department (ED) Visits  
due to Influenza-Like Illness (ILI),  
Riverside County: 2011/2012 Influenza Season



During week 7, 9.5% of visits to Riverside County emergency departments were related to influenza-like illnesses. Compared to historical data, this is slightly below normal limits.

Percent of Total Visits at Physician Sentinel Sites  
due to Influenza-like Illness (ILI),  
Riverside County: 2011/2012 Influenza Season



During week 7, 5.4% of visits to physician sentinel sites were related to influenza-like illnesses. Compared to historical data, this is within normal limits.

**Deaths due to Pneumonia and Influenza:** During week 7, 10.2% of deaths were due, in part, to pneumonia or influenza. Compared to historical data, this is within normal limits.

**School Absenteeism:** During week 7, 9.9% of students at sentinel school sites were absent due to illness. Compared to historical data, this is within normal limits.

**California Influenza Activity:** During week 6\*, overall influenza activity in California remained “widespread”. Outpatient influenza-like illness (ILI) activity as a percentage of total visits to sentinel providers decreased. The California Department of Public Health received no reports of laboratory-confirmed influenza deaths among persons aged less than 65 years.

\* Data reporting delayed one week.

**National Influenza Activity:** During week 6\*, influenza activity in the United States continued to increase. The proportion of outpatient visits for influenza-like illness (ILI) was 1.9%, which was below the national baseline of 2.4%. Region 7 reported ILI above region-specific baseline levels. During week 6, 6.7% of all deaths reported were due to P&I, a percentage that was below the epidemic threshold of 7.9%. One influenza-associated pediatric death was reported. One state reported widespread geographic activity; 12 states reported regional influenza activity; 17 states reported local activity; the District of Columbia, Guam, and 20 states reported sporadic activity; the U.S. Virgin Islands reported no influenza activity, and Puerto Rico did not report.

\* Data reporting delayed one week.

### Additional Resources

Riverside County Influenza Information:  
State of California Influenza Information:  
United States Influenza Information:

<http://www.rivco-diseasecontrol.org/SeasonalInfluenza/>  
<http://www.dhs.ca.gov/ps/dcdc/vrdl/html/flu/fluintro.htm>  
<http://www.cdc.gov/ncidod/diseases/flu/weekly.htm>

**Epidemiology and Program Evaluation**  
**Department of Public Health**  
**Riverside County Community Health Agency**  
<http://www.rivcohealthdata.org>

