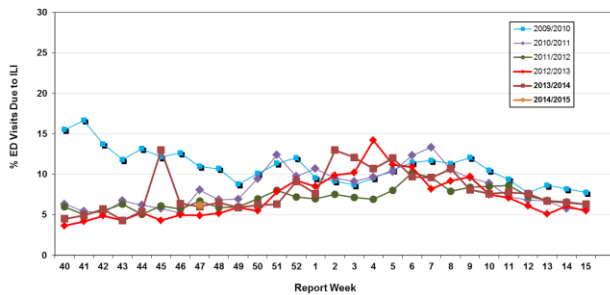


Influenza Season 2014/2015 – Riverside County, California

Influenza Surveillance Weekly Update

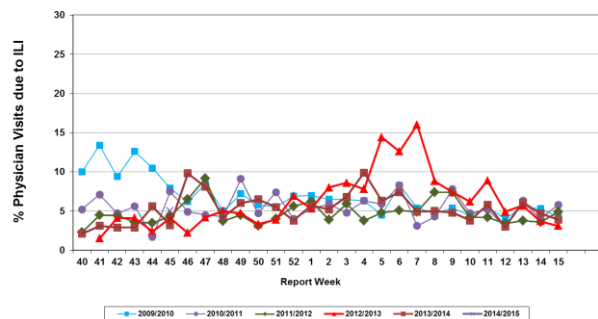
Week ending November 22, 2014

Percent of Emergency Department (ED) Visits due to Influenza-Like Illness (ILI), Riverside County: 2014/2015 Influenza Season



During week 47, 6.2% of visits to Riverside County emergency departments were related to influenza-like illnesses. Compared to historical data, this is within normal limits.

Percent of Total Visits at Physician Sentinel Sites due to Influenza-like Illness (ILI), Riverside County: 2014/2015 Influenza Season



During week 45**, 5.0% of visits to physician sentinel sites were related to influenza-like illnesses. Compared to historical data, this is within normal limits.

Deaths due to Pneumonia and Influenza: During week 46*, 5.0 % of deaths were due, in part, to pneumonia or influenza. Compared to historical data, this is within limits.

School Absenteeism: During week 46*, 5.6% of students at sentinel school sites were absent due to illness. Compared to historical data, this is below normal limits.

State Influenza Activity: During week 46*, overall influenza activity was “sporadic” in California. Based on available data from 87 out of an average of 133 enrolled sentinel providers, the percentage of visits for ILI in week 46 (2.6%) was within expected baseline levels for this time of year. No influenza-associated deaths in adults less than 65 years of age were reported during Week 46. No influenza outbreaks were reported, no novel influenza cases have been detected in California to date.

National Influenza Activity: During week 46*, influenza activity was low in most regions of the United States. The proportion of outpatient visits for influenza-like illness (ILI) was 1.6%, which is below the national baseline of 2.0%. All 10 regions reported ILI below region-specific baseline levels. Puerto Rico experienced high ILI activity; two states experienced low ILI activity; New York City and 48 states experienced minimal ILI activity; and the District of Columbia had insufficient data. The geographic spread of influenza in Puerto Rico and five states was reported as regional; 21 states reported local activity; the District of Columbia, the U.S. Virgin Islands, and 23 states reported sporadic activity; one state reported no influenza activity; and Guam did not report. During week 46, 5.0 % of all deaths reported through the 122-Cities Mortality Reporting System were due to P&I. This percentage was below the epidemic threshold of 6.4% for week 46. No influenza-associated pediatric deaths were reported.

** Data reporting delayed two weeks
* Data reporting delayed one week

Additional Resources

Riverside County Influenza Information:
State of California Influenza Information:
United States Influenza Information:

<http://www.rivco-diseasecontrol.org/Services/InfluenzaInformation.aspx>
[http://www.cdph.ca.gov/healthinfo/discond/Pages/Influenza\(Flu\).aspx](http://www.cdph.ca.gov/healthinfo/discond/Pages/Influenza(Flu).aspx)
<http://www.cdc.gov/ncidod/diseases/flu/weekly.htm>