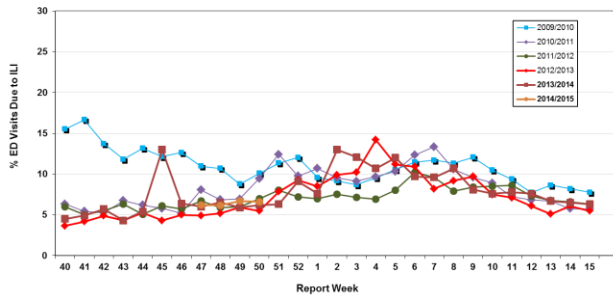


# Influenza Season 2014/2015 – Riverside County, California

## Influenza Surveillance Weekly Update

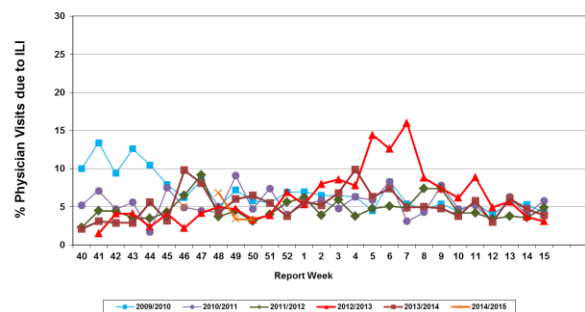
### Week ending December 13, 2014

**Percent of Emergency Department (ED) Visits due to Influenza-Like Illness (ILI), Riverside County: 2014/2015 Influenza Season**



During week 50, 6.6% of visits to Riverside County emergency departments were related to influenza-like illnesses. Compared to historical data, this is within normal limits.

**Percent of Total Visits at Physician Sentinel Sites due to Influenza-like Illness (ILI), Riverside County: 2014/2015 Influenza Season**



During week 50, 3.3% of visits to physician sentinel sites were related to influenza-like illnesses. Compared to historical data, this is below normal limits.

**Deaths due to Pneumonia and Influenza:** During week 50, 5.7% of deaths were due, in part, to pneumonia or influenza. Compared to historical data, this is below normal limits.

**School Absenteeism:** No data reported.

**State Influenza Activity:** During week 49\*, overall influenza activity was “sporadic” in California. Based on available data from 102 enrolled sentinel providers, the percentage of visits for ILI in week 49\* (1.9%) was within expected baseline levels for this time of year. No influenza-associated deaths in adults less than 65 years of age were reported during Week 49\*. One laboratory-confirmed influenza outbreak was reported.

**National Influenza Activity:** During week 49\*, influenza activity increased in the United States. The proportion of outpatient visits for influenza-like illness (ILI) was 2.5%, which is above the national baseline of 2.0%. Eight of 10 regions reported ILI at or above region-specific baseline levels. Puerto Rico and six states experienced high ILI activity; two state experienced moderate ILI activity; seven states experienced low ILI activity; New York City and 35 states experienced minimal ILI activity; and the District of Columbia had insufficient data. The geographic spread of influenza in 14 states was reported as widespread; Guam, Puerto Rico and 25 states reported regional activity; the U.S. Virgin Islands and seven states reported local activity; and the District of Columbia and four states reported sporadic activity. During week 49\*, 6.0 % of all deaths reported through the 122-Cities Mortality Reporting System were due to P&I. This percentage was below the epidemic threshold of 6.6% for week 49\*. Two influenza-associated pediatric deaths were reported.

\* Data reporting delayed one week  
 \*\* Data reporting delayed two weeks

#### Additional Resources

Riverside County Influenza Information:  
 State of California Influenza Information:  
 United States Influenza Information:

<http://www.rivco-diseasecontrol.org/Services/InfluenzaInformation.aspx>  
[http://www.cdph.ca.gov/healthinfo/discond/Pages/Influenza\(Flu\).aspx](http://www.cdph.ca.gov/healthinfo/discond/Pages/Influenza(Flu).aspx)  
<http://www.cdc.gov/ncidod/diseases/flu/weekly.htm>

