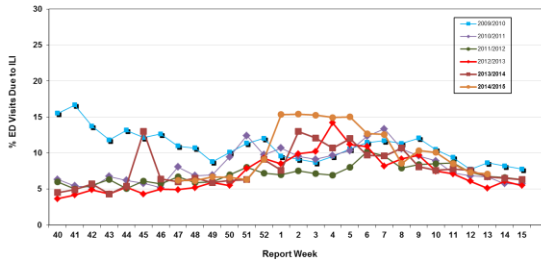


Influenza Season 2014/2015 – Riverside County, California

Influenza Surveillance Weekly Update

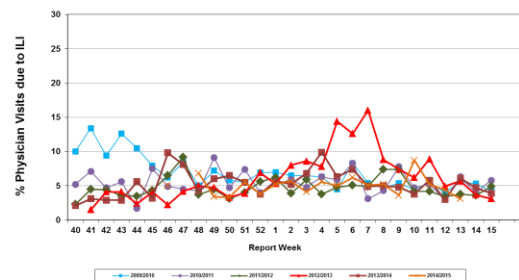
Week ending April 4, 2015

Percent of Emergency Department (ED) Visits due to Influenza-Like Illness (ILI),
Riverside County: 2014/2015 Influenza Season



During week 13, 7.1% of visits to Riverside County emergency departments were related to influenza-like illnesses. Compared to historical data, this is within normal limits.

Percent of Total Visits at Physician Sentinel Sites due to Influenza-like Illness (ILI),
Riverside County: 2014/2015 Influenza Season



During week 13, 3.1% of visits to physician sentinel sites were related to influenza-like illnesses. Compared to historical data, this is below normal limits.

Deaths due to Pneumonia and Influenza: During week 13, 6.6% of deaths were due, in part, to pneumonia or influenza. Compared to historical data, this is below normal limits.

School Absenteeism: During week 13, 13.1 % of students at sentinel school sites were absent due to illness. Compared to historical data, this is with in normal limits.

State Influenza Activity: During week 12*, overall influenza activity was “local” in California. Based on available data from 82 enrolled sentinel providers, the percentage of visits for ILI in week 12* (1.8%) does not exceed the epidemic threshold for this time of year. No new influenza-associated death in adults less than 65 years of age was reported during Week 12*. 10 laboratory-confirmed influenza outbreaks were reported.

National Influenza Activity: During week 12*, influenza activity decreased, but remained elevated in the United States. The proportion of outpatient visits for influenza-like illness (ILI) was 2.0%, which is at the national baseline of 2.0%. Five regions reported ILI at or above region-specific baseline levels. Puerto Rico and two states experienced high ILI activity; eight states experienced low ILI activity; New York City and 40 states experienced minimal ILI activity; the District of Columbia had insufficient data. The geographic spread of influenza in four states was reported as widespread; the U.S. Virgin Islands and 20 states reported regional activity; Guam, Puerto Rico, and 22 states reported local activity; and the District of Columbia and four state reported sporadic activity. During week 12*, 6.9% of all deaths reported through the 122 Cities Mortality Reporting System were due to P&I. This percentage was below the epidemic threshold of 7.1% for week 12*. Seven influenza-associated pediatric deaths were reported.

*Reporting delayed one week

Additional Resources

Riverside County Influenza Information:
 State of California Influenza Information:
 United States Influenza Information:

<http://www.rivco-diseasecontrol.org/Services/InfluenzaInformation.aspx>
[http://www.cdph.ca.gov/healthinfo/discond/Pages/Influenza\(Flu\).aspx](http://www.cdph.ca.gov/healthinfo/discond/Pages/Influenza(Flu).aspx)
<http://www.cdc.gov/ncidod/diseases/flu/weekly.htm>

Epidemiology and Program Evaluation
 County of Riverside Department of Public Health
<http://www.rivcohealthdata.org>
 (951) 358-5557

