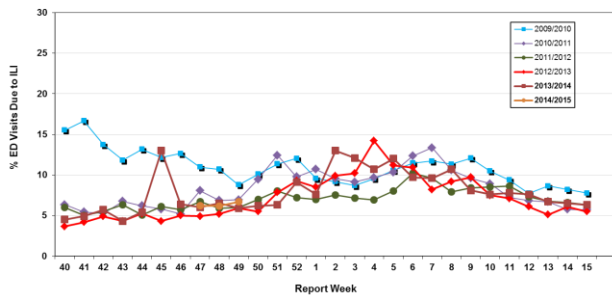


# Influenza Season 2014/2015 – Riverside County, California

## Influenza Surveillance Weekly Update

### Week ending December 6, 2014

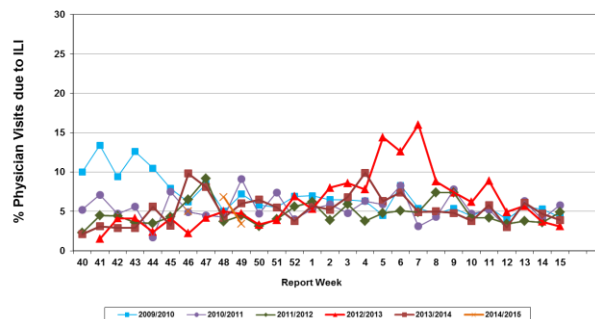
**Percent of Emergency Department (ED) Visits due to Influenza-Like Illness (ILI), Riverside County: 2014/2015 Influenza Season**



During week 49, 6.7% of visits to Riverside County emergency departments were related to influenza-like illnesses. Compared to historical data, this is within normal limits.

During week 49, 3.4% of visits to physician sentinel sites were related to influenza-like illnesses. Compared to historical data, this is below normal limits.

**Percent of Total Visits at Physician Sentinel Sites due to Influenza-like Illness (ILI), Riverside County: 2014/2015 Influenza Season**



**Deaths due to Pneumonia and Influenza:** During week 49, 5.8% of deaths were due, in part, to pneumonia or influenza. Compared to historical data, this is within normal limits.

**School Absenteeism:** During week 49, 13.4% of students at sentinel school sites were absent due to illness. Compared to historical data, this is above normal limits.

**State Influenza Activity:** During week 48\*, overall influenza activity was “sporadic” in California. Based on available data from 104 enrolled sentinel providers, the percentage of visits for ILI in week 48\* (2.5%) was within expected baseline levels for this time of year. No influenza-associated deaths in adults less than 65 years of age were reported during Week 48\*. No influenza outbreaks were reported.

**National Influenza Activity:** During week 48\*, influenza activity increased in the United States. The proportion of outpatient visits for influenza-like illness (ILI) was 2.6%, which is above the national baseline of 2.0%. Eight of 10 regions reported ILI at or above region-specific baseline levels. Puerto Rico and six states experienced high ILI activity; one state experienced moderate ILI activity; five states experienced low ILI activity; New York City and 38 states experienced minimal ILI activity; and the District of Columbia had insufficient data. The geographic spread of influenza in Puerto Rico and six states was reported as widespread; 14 states reported regional activity; the U.S. Virgin Islands and 19 states reported local activity; the District of Columbia and 11 states reported sporadic activity; and Guam did not report. During week 48\*, 5.4 % of all deaths reported through the 122-Cities Mortality Reporting System were due to P&I. This percentage was below the epidemic threshold of 6.5% for week 48\*. No influenza-associated pediatric deaths were reported.

\* Data reporting delayed one week  
 \*\* Data reporting delayed two weeks

#### Additional Resources

Riverside County Influenza Information:  
 State of California Influenza Information:  
 United States Influenza Information:

<http://www.rivco-diseasecontrol.org/Services/InfluenzaInformation.aspx>  
[http://www.cdph.ca.gov/healthinfo/discond/Pages/Influenza\(Flu\).aspx](http://www.cdph.ca.gov/healthinfo/discond/Pages/Influenza(Flu).aspx)  
<http://www.cdc.gov/ncidod/diseases/flu/weekly.htm>

