



California Department of Public Health Influenza Surveillance Program

California Weekly Influenza Snapshot May 1, 2016 – May 7, 2016

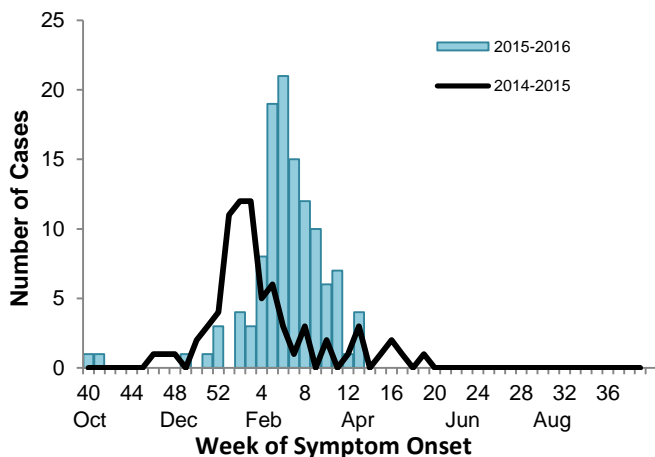
Influenza Geographic Spread

No activity	Sporadic	Local	Regional	Widespread
-------------	----------	-------	----------	------------

Influenza-related deaths among patients <65 years of age during 2015–2016 season

- **117 deaths thus far for 2015–2016 season**

Figure 1: Number of Influenza-related Deaths*

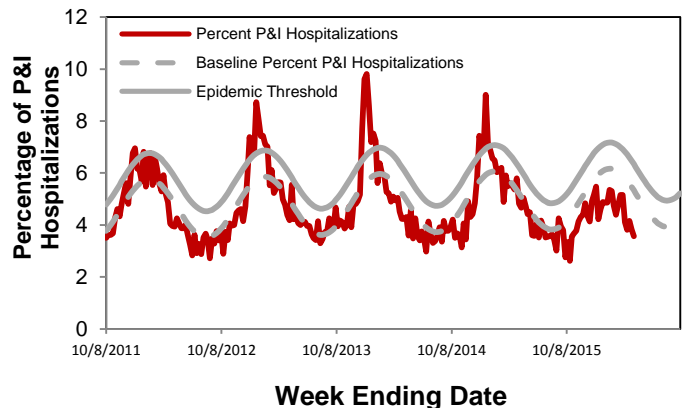


Note: The 2014–15 season contains a week 53. This season's data have been shifted so that week 1 aligns across years.
*Earliest date associated with the illness was used for cases without reported date of symptom onset.

Pneumonia and influenza hospitalization activity (Inpatient)

- **Below expected levels for this time of year**

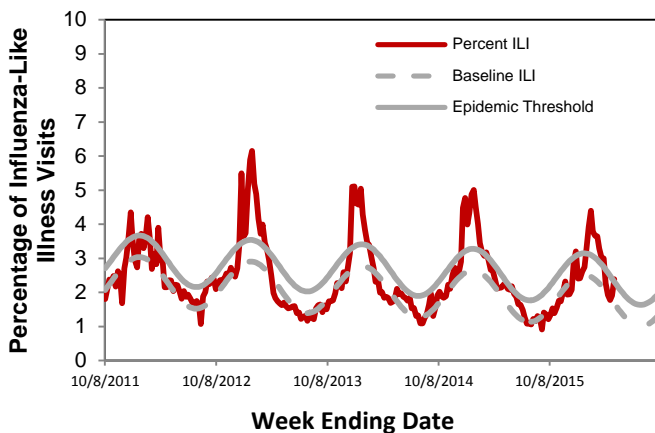
Figure 2: Percent of Patients Admitted to Northern CA Kaiser Hospitals for Pneumonia and Influenza



Influenza-like illness activity (Outpatient)

- **Above expected levels for this time of year**

Figure 3: Percentage of Influenza-like Illness Visits Among Patients Seen by California Sentinel Providers



Influenza laboratory detections

- **6.4% of specimens tested were positive for influenza**

Figure 4: Number of Influenza Detections by Type and Subtype and Percent Positive

