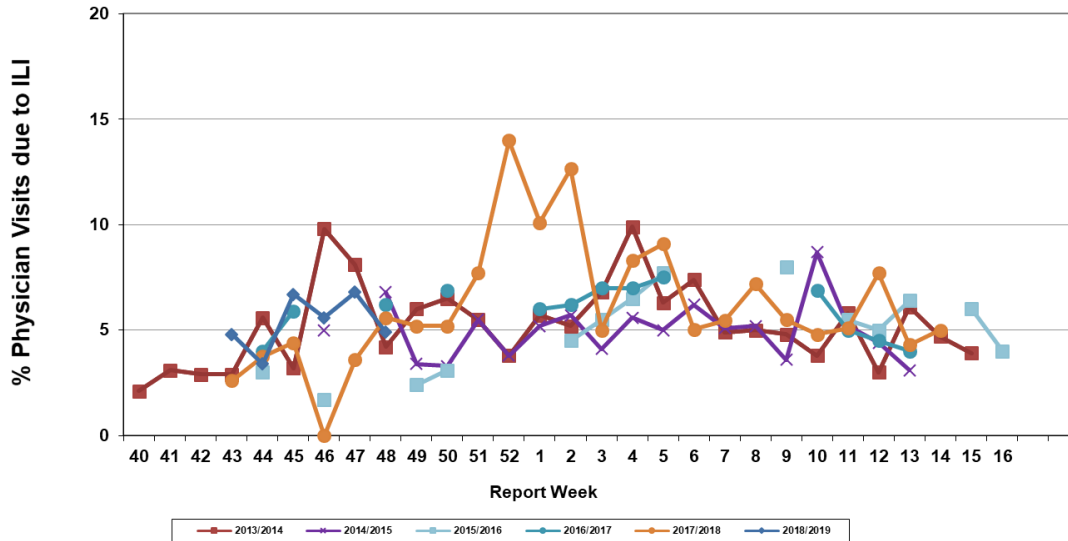


Influenza Season 2018/2019 – Riverside County, California

Influenza Surveillance Weekly Update

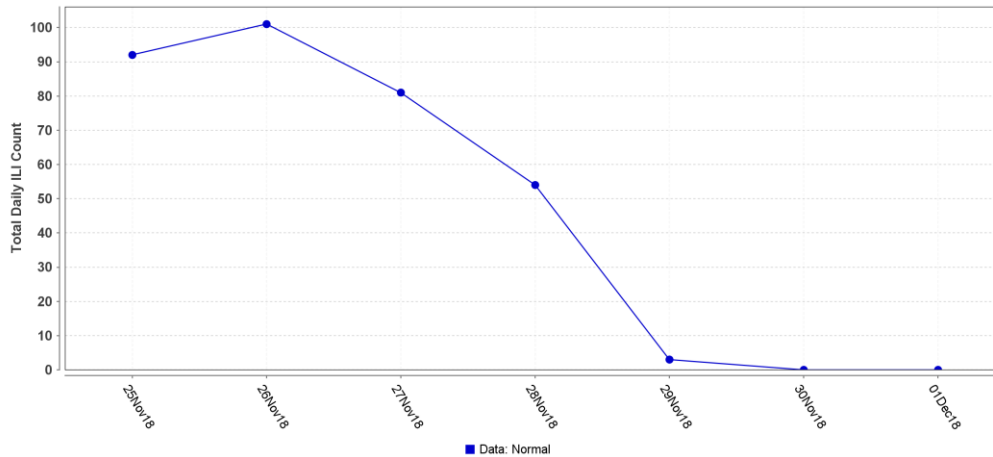
Week ending December 1, 2018

**Percent of Total Visits at Physician Sentinel Sites
due to Influenza-like Illness (ILI),
Riverside County: 2018/2019 Influenza Season**



During week 44*, 4.9% of visits to physician sentinel sites were related to influenza-like illnesses. Compared to historical data, this is within normal limits.

Total Healthcare Provider Visits Due to ILI (Week 48)



Hospital surveillance system triggers alerts due to unusually high influenza-like illness visits. During week 48 visits were below normal.

Deaths due to Pneumonia and Influenza: During week 48, 8.3% of deaths were due, in part, to pneumonia or influenza. Compared to historical data, this is within normal limits.

School Absenteeism: During week 46**, 6.6% of students at sentinel school sites were absent due to illness. Compared to historical data, this is within normal limits.

State Influenza Activity: During week 45**, overall influenza activity was “Sporadic” in California. Based on available data from 84 enrolled sentinel providers, the percentage of visits for ILI in week 43** (1.7%) is within expected baseline levels for this time of year. Eight laboratory-confirmed influenza-associated deaths (since Sept. 30, 2018) in adults less than 65 years of age were reported during Week 45**. Zero laboratory-confirmed influenza outbreaks were reported.

National Influenza Activity: During week 46**, influenza activity remains low in the United States. The proportion of outpatient visits for influenza-like illness (ILI) was 1.9%, which is below the national baseline of 2.2%. Three states experienced moderate ILI activity, New York City and eight states reported low activity; The District of Columbia, Puerto Rico, the U.S. Virgin Islands and 39 states experienced minimal activity; and Puerto Rico had insufficient data. The geographic spread of influenza one state was reported as regional; Guam and 14 states reported local activity; and the District of Columbia, Puerto Rico, the U.S. Virgin Islands and 35 states reported sporadic activity. During week 45**, 5.6% of all deaths reported through the National Center for Health Statistics (NCHS) were due to P&I. This percentage is below the epidemic threshold of 6.3% for week 45**. One influenza associated pediatric death was reported.

*Reporting delayed one week

** Reporting delayed several weeks

Additional Resources

Riverside County Influenza Information:

<http://www.rivco-diseasecontrol.org/Services/InfluenzaInformation.aspx>

State of California Influenza Information:

<https://www.cdph.ca.gov/Programs/CID/DCDC/Pages/Immunization/Influenza.aspx>

United States Influenza Information:

<https://www.cdc.gov/flu/weekly/pastreports.htm>



County of Riverside Department of Public Health

<http://www.rivcohealthdata.org> (951) 358-5557