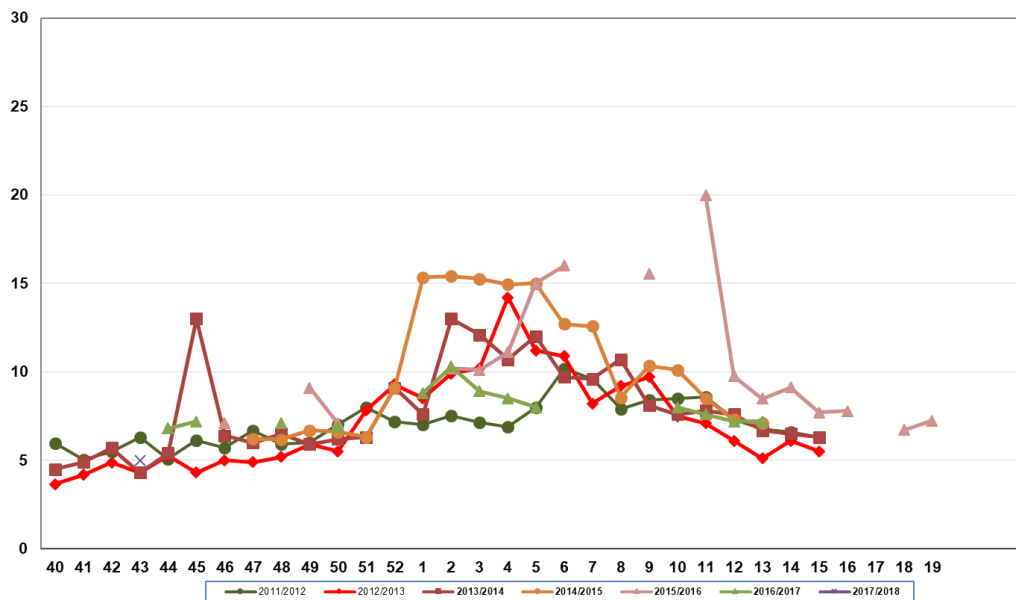


Influenza Season 2017/2018 – Riverside County, California

Influenza Surveillance Weekly Update

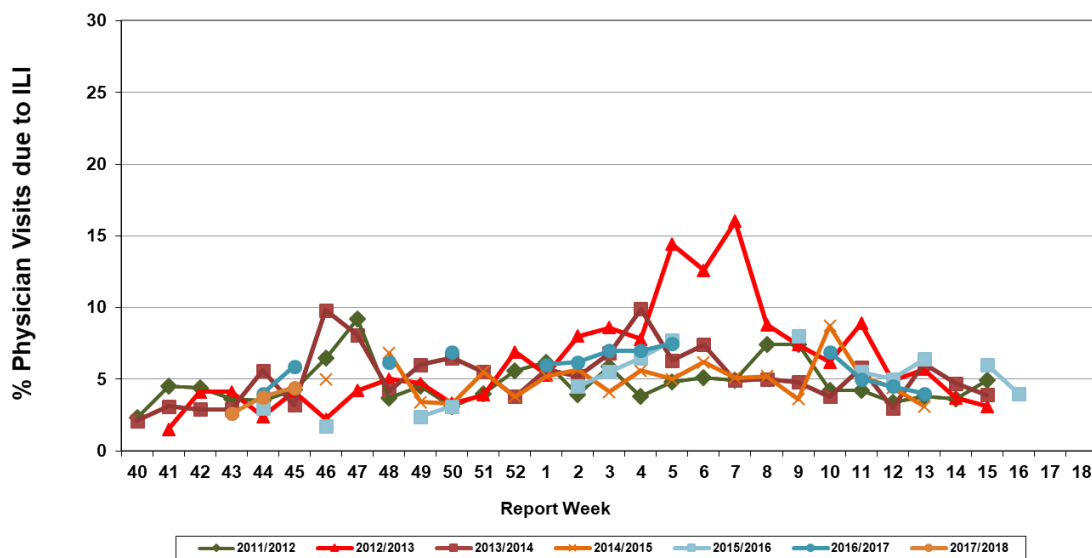
Week ending November 18, 2017

Percent of Emergency Department (ED) Visits due to Influenza-Like Illness (ILI),
Riverside County: 2017/2018 Influenza Season



During week 43**, 5.0% of visits to Riverside County emergency departments were related to influenza-like illnesses. Compared to historical data, this is within normal limits.

Percent of Total Visits at Physician Sentinel Sites due to Influenza-like Illness (ILI),
Riverside County: 2017/2018 Influenza Season



During week 45*, 4.4% of visits to physician sentinel sites were related to influenza-like illnesses. Compared to historical data, this is within normal limits.

Deaths due to Pneumonia and Influenza: During week 45*, 3.1% of deaths were due, in part, to pneumonia or influenza. Compared to historical data, this is below normal limits.

School Absenteeism: During week 45*, 8.5% of students at sentinel school sites were absent due to illness. Compared to historical data, this is within normal limits.

State Influenza Activity: During week 45*, overall influenza activity was “Regional” in California. Based on available data from 74 enrolled sentinel providers, the percentage of visits for ILI in week 45* (1.9%) is within expected baseline levels for this time of year. Three laboratory-confirmed influenza-associated deaths in adults less than 65 years of age were reported during Week 45*. One laboratory-confirmed influenza outbreaks were reported.

National Influenza Activity: During week 45*, influenza activity is increasing in the United States. The proportion of outpatient visits for influenza-like illness (ILI) was 1.9%, which is below the national baseline of 2.2%. One region reported ILI at or above region-specific baseline levels. One state experienced high ILI activity, two states experienced moderate ILI activity; Six states experienced low ILI activity, New York City, the District of Columbia and 42 states reported no activity. The geographic spread of influenza in Guam, Puerto Rico and nine states was reported as regional, 13 states reported local activity; the U.S. Virgin Islands and 26 states reported sporadic activity; and the District of Columbia and two states reported no activity. During week 43**, 5.9% of all deaths reported through the National Center for Health Statistics (NCHS) were due to P&I. This percentage is below the epidemic threshold of 6.3% for week 43**. No influenza associated pediatric deaths were reported.

*Reporting delayed one week

** Reporting delayed several weeks

Additional Resources

Riverside County Influenza Information:

<http://www.rivco-diseasecontrol.org/Services/InfluenzaInformation.aspx>

State of California Influenza Information:

<https://www.cdph.ca.gov/Programs/CID/DCDC/Pages/Immunization/Influenza.aspx>

United States Influenza Information:

<https://www.cdc.gov/flu/weekly/pastreports.htm>

Epidemiology and Program Evaluation
County of Riverside Department of Public Health

<http://www.rivcohealthdata.org>

(951) 358-5557

