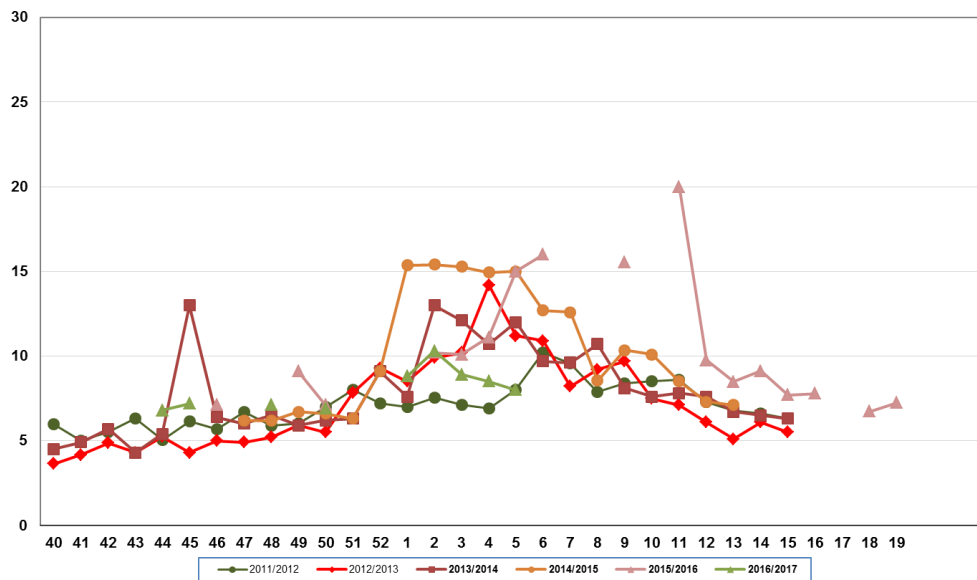


Influenza Season 2016/2017 – Riverside County, California

Influenza Surveillance Weekly Update

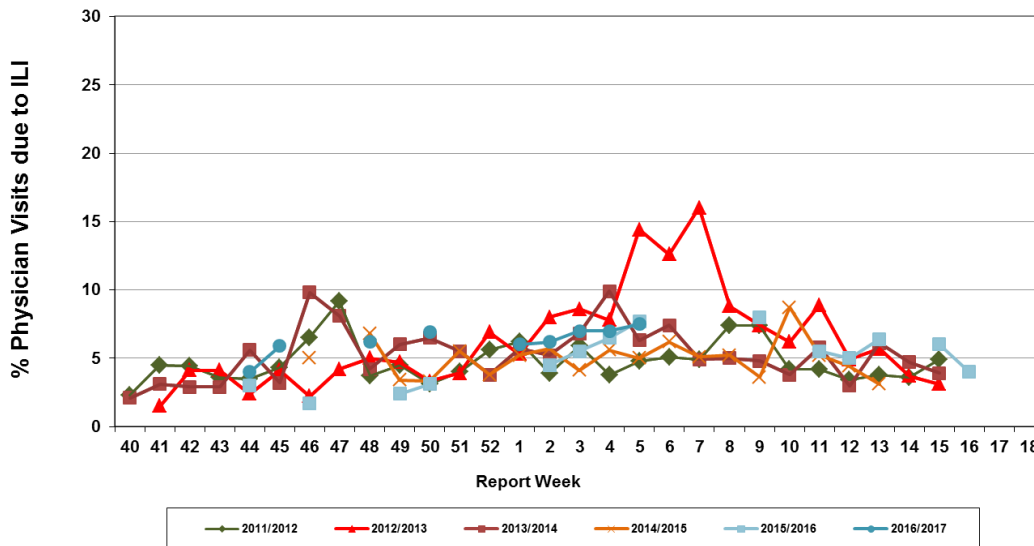
Week ending February 11, 2017

**Percent of Emergency Department (ED) Visits
due to Influenza-Like Illness (ILI),
Riverside County: 2016/2017 Influenza Season**



During week 5*, 8.0% of visits to Riverside County emergency departments were related to influenza-like illnesses. Compared to historical data, this is within normal limits.

**Percent of Total Visits at Physician Sentinel Sites
due to Influenza-like Illness (ILI),
Riverside County: 2016/2017 Influenza Season**



During week 5*, 7.5% of visits to physician sentinel sites were related to influenza-like illnesses. Compared to historical data, this is within normal limits.

Deaths due to Pneumonia and Influenza: During week 5*, 5.1% of deaths were due, in part, to pneumonia or influenza. Compared to historical data, this is below normal limits.

School Absenteeism: During week 5*, 13.8 % of students at sentinel school sites were absent due to illness. Compared to historical data, this is within normal limits.

State Influenza Activity: During week 3**, overall influenza activity was “widespread” in California. Based on available data from 82 enrolled sentinel providers, the percentage of visits for ILI in week 3** (2.6%) is within expected baseline levels for this time of year. Nine laboratory-confirmed influenza-associated deaths in adults less than 65 years of age were reported during Week 3**. 25 laboratory-confirmed influenza outbreaks were reported.

National Influenza Activity: During week 5*, influenza activity increased in the United States. The proportion of outpatient visits for influenza-like illness (ILI) was 4.8%, which is above the national baseline of 2.2%. All 10 regions reported ILI at or above region-specific baseline levels. New York City and 23 states experienced high ILI activity; 10 states experienced moderate ILI activity, Puerto Rico and eight states experienced low ILI activity, nine states experienced minimal ILI activity, and the District of Columbia had insufficient data. The geographic spread of influenza in Puerto Rico and 43 states were widespread; Guam and six states reported regional activity, the District of Columbia and one state reported local activity; and the U.S. Virgin Islands reported no activity. During week 3**, 7.9% of all deaths reported through the 122 Cities Mortality Reporting System were due to P&I. This percentage was above the epidemic threshold of 7.4% for week 3**. Five influenza associated pediatric deaths were reported.

*Reporting delayed one week

** Reporting delayed several weeks

Additional Resources

Riverside County Influenza Information:

<http://www.rivco-diseasecontrol.org/Services/InfluenzaInformation.aspx>

State of California Influenza Information:

[http://www.cdph.ca.gov/healthinfo/discond/Pages/Influenza\(Flu\).aspx](http://www.cdph.ca.gov/healthinfo/discond/Pages/Influenza(Flu).aspx)

United States Influenza Information:

<http://www.cdc.gov/ncidod/diseases/flu/weekly.htm>

Epidemiology and Program Evaluation
County of Riverside Department of Public Health
<http://www.rivcohealthdata.org>
(951) 358-5557

