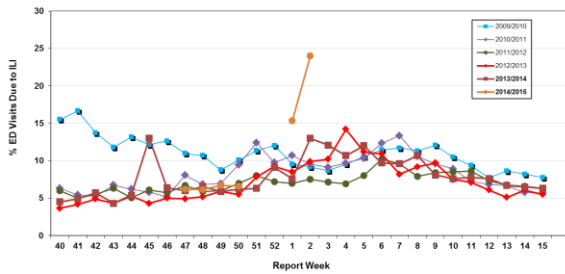


Influenza Season 2014/2015 – Riverside County, California

Influenza Surveillance Weekly Update

Week ending January 17, 2015

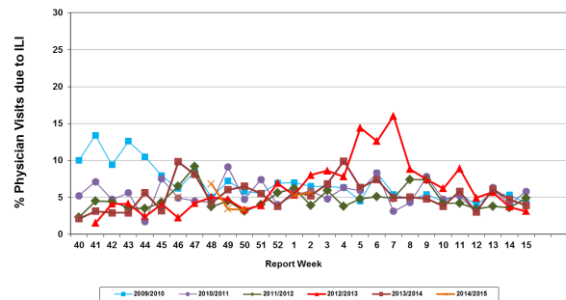
Percent of Emergency Department (ED) Visits due to Influenza-Like Illness (ILI), Riverside County: 2014/2015 Influenza Season



During week 2, 24% of visits to Riverside County emergency departments were related to influenza-like illnesses. Compared to historical data, this is above normal limits.

During week 2, 5.7% of visits to physician sentinel sites were related to influenza-like illnesses. Compared to historical data, this is within normal limits.

Percent of Total Visits at Physician Sentinel Sites due to Influenza-like Illness (ILI), Riverside County: 2014/2015 Influenza Season



Deaths due to Pneumonia and Influenza: During week 2, 8.0% of deaths were due, in part, to pneumonia or influenza. Compared to historical data, this is within normal limits.

School Absenteeism: During week 2, 9.8% of students at sentinel school sites were absent due to illness. Compared to historical data, this is within limits.

State Influenza Activity: During week 1*, overall influenza activity was “widespread” in California. Based on available data from 117 enrolled sentinel providers, the percentage of visits for ILI in week 1* (4.1%) exceeds the epidemic threshold (3.7%) for this time of year. No influenza-associated deaths in adults less than 65 years of age were reported during Week 1*. Eleven laboratory-confirmed influenza outbreaks were reported.

National Influenza Activity: During week 1*, influenza activity continued at elevated levels in the United States. The proportion of outpatient visits for influenza-like illness (ILI) was 4.4%, which is above the national baseline of 2.0%. All 10 regions reported ILI at or above region-specific baseline levels. Puerto Rico and 24 states experienced high ILI activity; New York City and seven states experienced moderate ILI activity; seven states experienced low ILI activity; 11 states experienced minimal ILI activity; and the District of Columbia and one state had insufficient data. The geographic spread of influenza in Guam and 46 was reported as widespread; Puerto Rico, the U.S. Virgin Islands and three states reported regional activity; and the District of Columbia and one state reported local activity. During week 1*, 8.5 % of all deaths reported through the 122-Cities Mortality Reporting System were due to P&I. This percentage was above the epidemic threshold of 7.0% for week 1*. Nineteen influenza-associated pediatric deaths were reported.

* Data reporting delayed one week

Additional Resources

Riverside County Influenza Information:
 State of California Influenza Information:
 United States Influenza Information:

<http://www.rivco-diseasecontrol.org/Services/InfluenzaInformation.aspx>
[http://www.cdph.ca.gov/healthinfo/discond/Pages/Influenza\(Flu\).aspx](http://www.cdph.ca.gov/healthinfo/discond/Pages/Influenza(Flu).aspx)
<http://www.cdc.gov/ncidod/diseases/flu/weekly.htm>

Epidemiology and Program Evaluation
 County of Riverside Department of Public Health
<http://www.rivcohealthdata.org>
 (951) 358-5557

