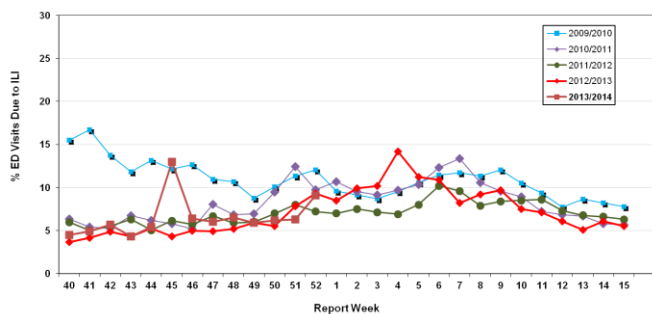


Influenza Season 2012/2013 – Riverside County, California

Influenza Surveillance Weekly Update

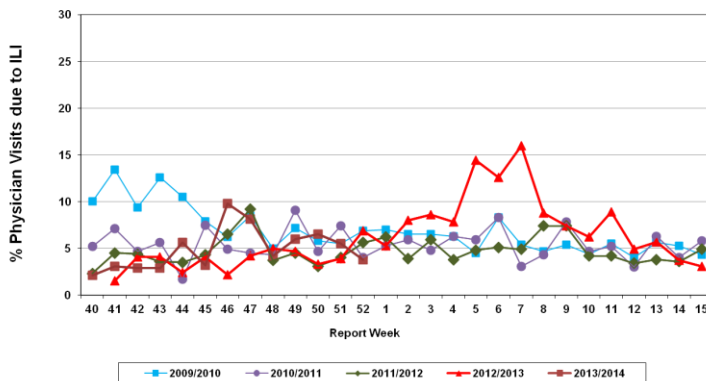
Week ending December 28, 2013

**Percent of Emergency Department (ED) Visits due to Influenza-Like Illness (ILI),
Riverside County: 2013/2014 Influenza Season**



During week 52, 9.1 % of visits to Riverside County emergency departments were related to influenza-like illnesses. Compared to historical data, this is above normal limits.

**Percent of Total Visits at Physician Sentinel Sites due to Influenza-like Illness (ILI),
Riverside County: 2013/2014 Influenza Season**



During 52, 3.8% of visits to physician sentinel sites were related to influenza-like illnesses. Compared to historical data, this is below normal limits.

Deaths due to Pneumonia and Influenza: During week 52, 4.3 % of deaths were due, in part, to pneumonia or influenza. Compared to historical data, this is below normal limits.

School Absenteeism: No data available due to holiday.

State Influenza Activity: No data available due to holiday.

National Influenza Activity: During week 51*, influenza increased slightly in the United States. The proportion of outpatient visits for influenza-like illness (ILI) was 3.0%, above the national baseline of 2.0%. Eight regions reported ILI above region-specific baseline levels. Six states experienced high ILI activity, eight state experienced moderate ILI activity, six states experienced low ILI, 28 states experienced minimal ILI activity and the District of Columbia, New York City and two states had insufficient data. The geographic spread of influenza in 10 states was reported as widespread; Guam and 23 states reported regional influenza activity; 12 states reported local influenza activity; the District of Columbia, Puerto Rico, and 4 states reported sporadic influenza activity, and the U.S. Virgin Islands did not report. During week 51, 6.7 % of all deaths reported through the 122-Cities Mortality Reporting System were due to P&I. This percentage was below the epidemic threshold of 6.9% for week 51. One influenza-associated pediatric death was reported.

* Data reporting delayed one week.

Additional Resources

Riverside County Influenza Information:
 State of California Influenza Information:
 United States Influenza Information:

<http://www.rivco-diseasecontrol.org/Services/Influenzainformation.aspx>
[http://www.cdph.ca.gov/healthinfo/discond/Pages/Influenza\(Flu\).aspx](http://www.cdph.ca.gov/healthinfo/discond/Pages/Influenza(Flu).aspx)
<http://www.cdc.gov/ncidod/diseases/flu/weekly.htm>

Epidemiology and Program Evaluation
County of Riverside Department of Public Health
<http://www.rivcohealthdata.org>
 (951) 358-5557

